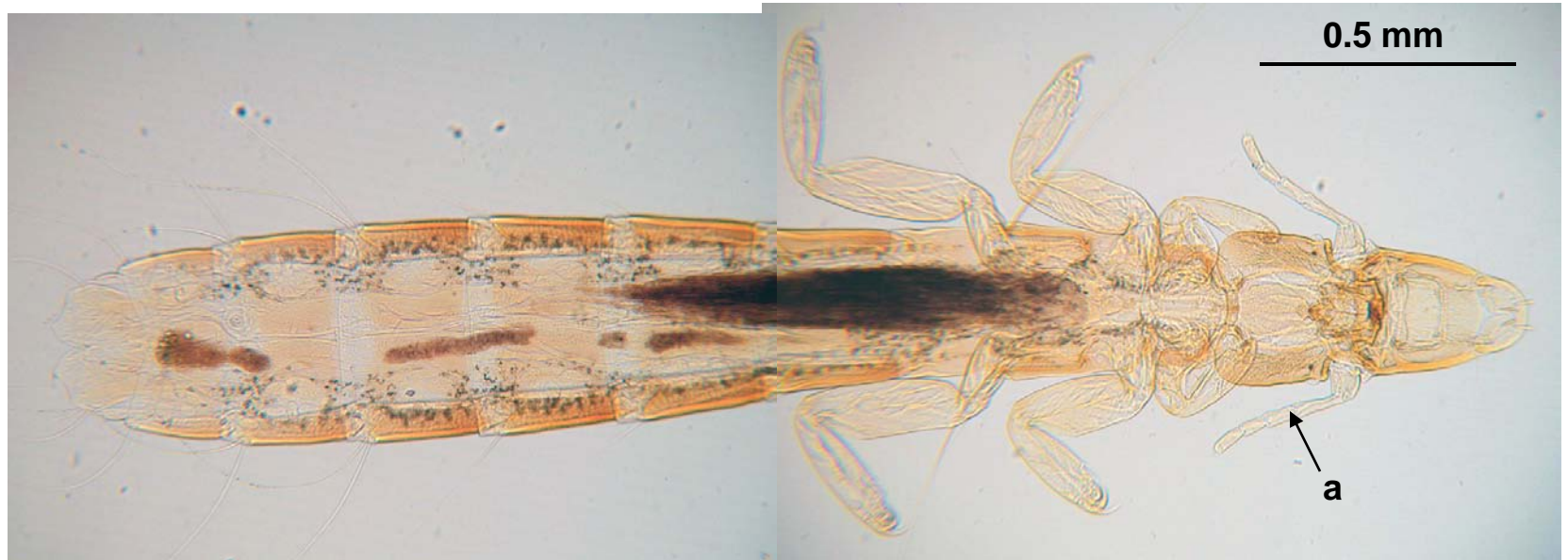
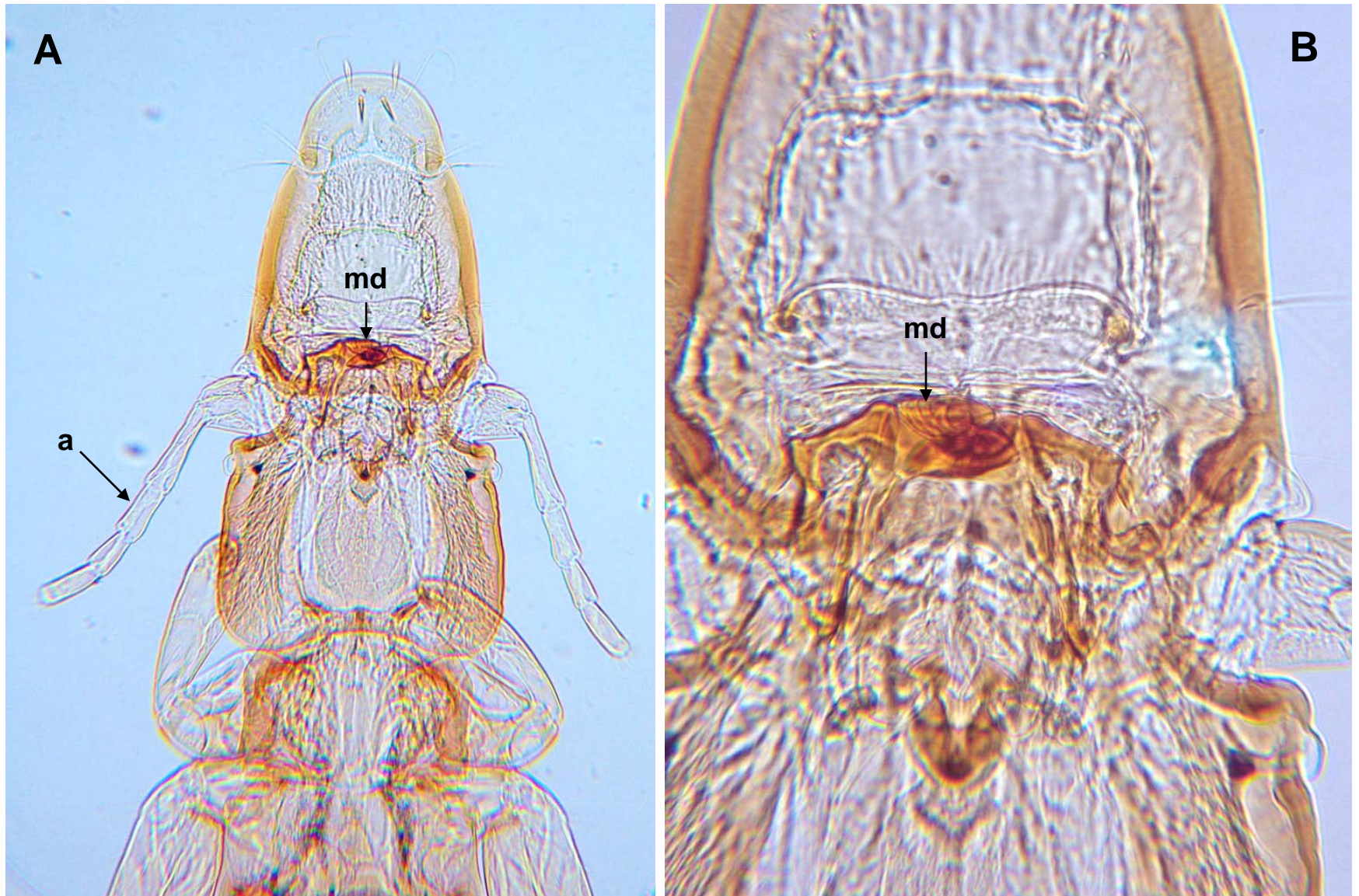


*Columbicola columbae*, female, entire (det.: S. A. Childress). Note: example of “ischnoceran” biting louse with exposed filamentous antennae (a) and lacking maxillary palps.

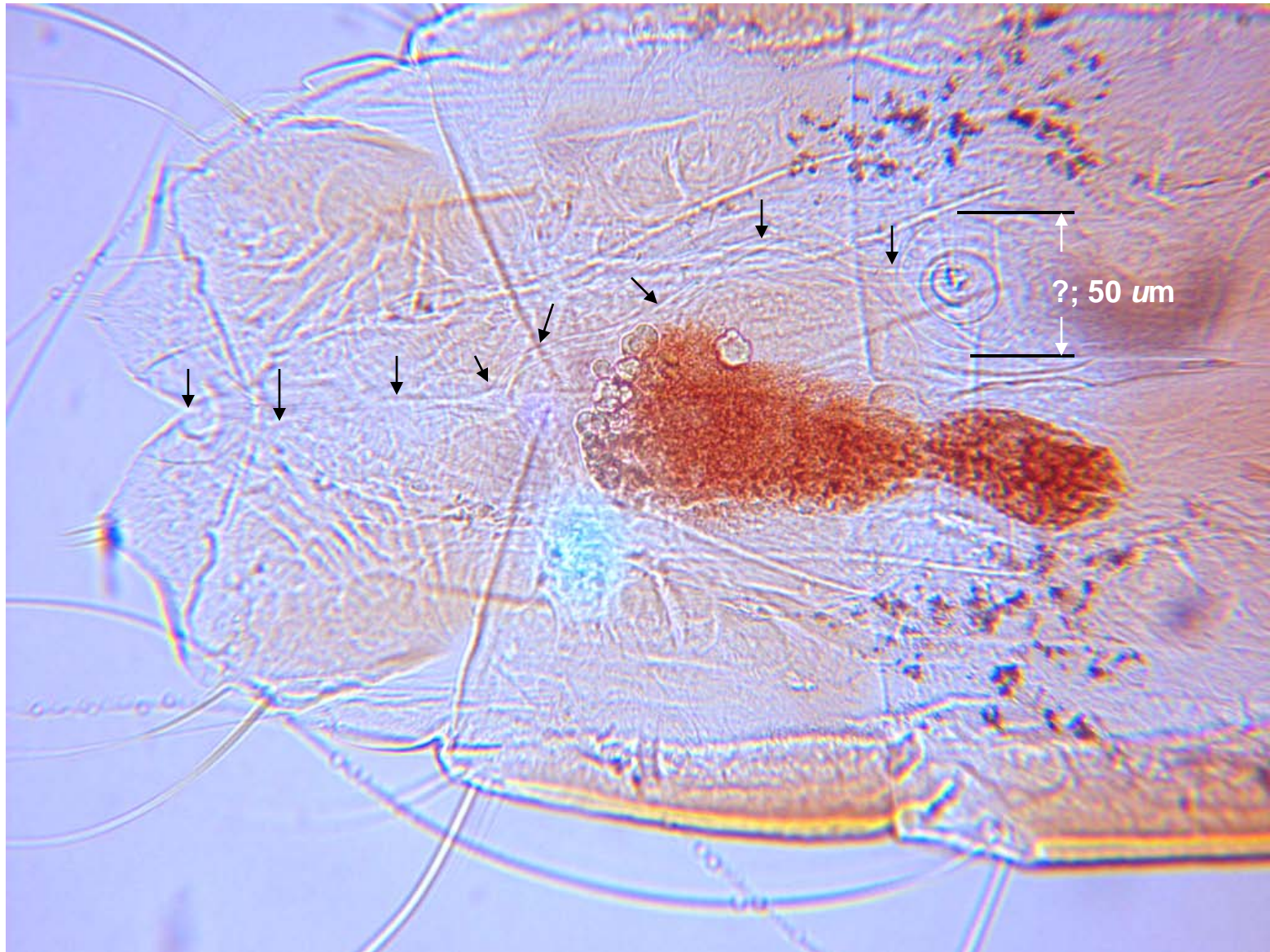


*C. columbae*, female, head (A). Legend: a, antenna; md, mandibles (note ridges on mandible, arrow in B).





*C. columbae*, female, posterior. Note: duct leading from circular structure (?) communicating with outside (arrows).





*C. columbae*, male, head (A); genitalia (arrow in B).

